

AutoMail address book and "recipient" combobox are designed to simplify a function of file sending. When using AutoMail you can type recipient's address in the combobox; if you want to add the address to the address book -- just click the button with plus sign in the right the "recipient" combobox.

AutoMail command line parameters

You can use AutoMail command line abilities to reach some special purposes such as using it as an automated mail sender from DOS batch file, etc. AutoMail can be started with following command-line parameters:

automail.exe [file list] [option] [option] ... [option]

where options and parameters are:

[file list] -- list of files to be attached to the mail message. File names should be separated by spaces. Please provide a full path for each file; long file/path names should be enclosed in doublequotes

/to:<e-mail> -- specifies e-mail address to appear in the "recipient" combobox.

/subj: <subject text> -- specifies subject text that appears in the subject line of AutoMail dialog. Overrides default value, specified in AutoMail Preferences dialog.

/msgfile: <message text file> -- contents of this text file will be used as a message text. Overrides default value, specified in AutoMail Preferences dialog.

/msgtext: <message text> -- this text file will be used as a message text. Overrides **/msgfile** option and default value, specified in AutoMail Preferences dialog both.

/autorun: [yes | no] -- specifies whether AutoMail should perform all tasks automatically. If the value of this option is **yes** and information you specified in the command line is enough to send files or message, the AutoMail dialog won't appear on the screen and the files will be sent immediately. Default value of the **/autorun** option is **no**.

Examples:

automail.exe c:\report.doc "c:\long folder name\one more report.doc" /to:boss@company.com

/subj: daily report /autorun: yes

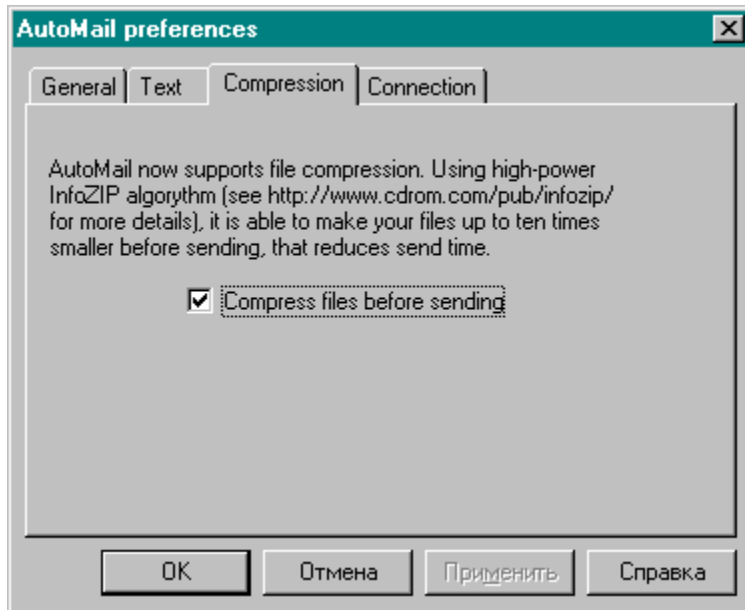
Automatically sends c:\report.doc and "c:\long folder name\one more report.doc" files to boss@company.com

automail.exe /to: friend@provider.com

Opens AutoMail dialog with all fields set to default values and "recipient" combobox set to "friend@provider.com"

Compression

AutoMail now supports file compression. Using high-power InfoZIP algorithm, it is able to make your files up to ten times smaller before sending, that reduces send time and decreases network traffic.



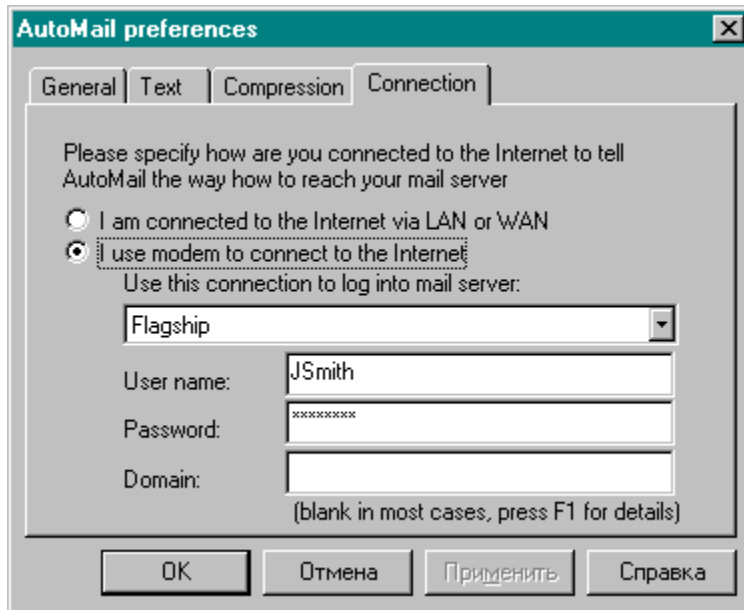
When compressing files, AutoMail makes one archive file, names it *00000001.ZIP* or similar and sends to your recipient. To restore files, compressed by AutoMail, your recipient will have to use any utility that support ZIP decompression such as WinZIP or PkZip.

To bring you ZIP compression support we used excellent InfoZIP libraries, that could be found at <http://www.cdrom.com/pub/infozip/>. Unfortunately, some archiver versions like WinZIP 7.x do not support InfoZIP archive files, so be carefull when sending ZIPed files to you recipients at the first time.

AutoMail supports file compression, based on ZIP algorithms. Click [here](#) to learn more about this feature..

Connection

The Connection tab specifies how AutoMail should connect to mail server in order to send your files. To get more information please click the item of your interest on the picture above:



The image shows a screenshot of the 'AutoMail preferences' dialog box, specifically the 'Connection' tab. The dialog has a title bar with 'AutoMail preferences' and a close button. Below the title bar are four tabs: 'General', 'Text', 'Compression', and 'Connection'. The 'Connection' tab is selected. The main area contains the following text and controls:

Please specify how are you connected to the Internet to tell AutoMail the way how to reach your mail server

I am connected to the Internet via LAN or WAN

use modem to connect to the Internet

Use this connection to log into mail server:

Flagship

User name: JSmith

Password: xxxxxxxx

Domain:

(blank in most cases, press F1 for details)

At the bottom of the dialog are four buttons: 'OK', 'Отмена', 'Применить', and 'Справка'.

When dialing remote Windows NT server in some cases you should specify Windows NT domain you are logging in. If you are dialing server of your provider (the most common case), this information is unused and should not be specified. If you are not sure about your domain name please leave this field blank (after you've carefully filled all other fields on this tab); if AutoMail will successfully send all the files -- leave this field blank forever; if not -- please contact technical support of your provider or your system administrator.

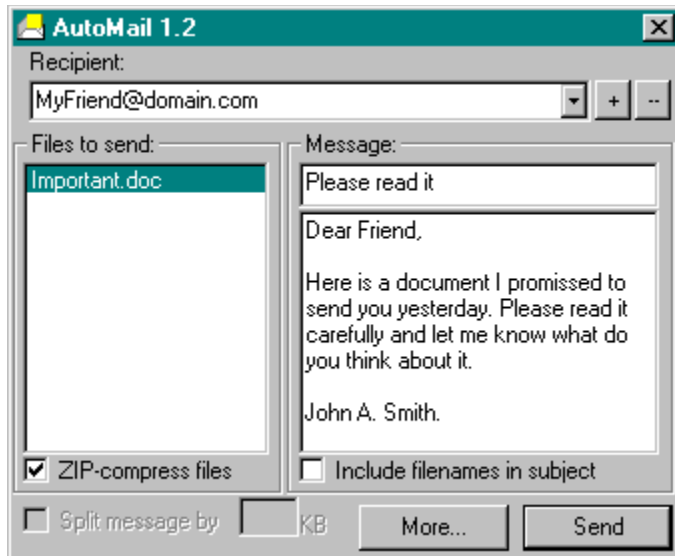
If you are a modem user, you might have several set up dialup connections to connect to the Internet. In this case you should specify, which of them AutoMail should use to dial remote server.

When connected remote server you should specify your user name (login) and password to log into network. AutoMail must have this information to do this job for you automatically.

When connected remote server you should specify your user name (login) and password to log into network. AutoMail must have this information to do this job for you automatically.

Contents

AutoMail is a small application, designed to help you sending files by email from the Windows Explorer context menu.



To send files from Explorer, you have to select them in a usual way, right-click selected files and use [Send to|A friend](#) menu item to invoke AutoMail create a new mail message. Then type your friend's email address in the combobox in the topmost part of AutoMail window and then click Send button. Voila!

AutoMail 1.2

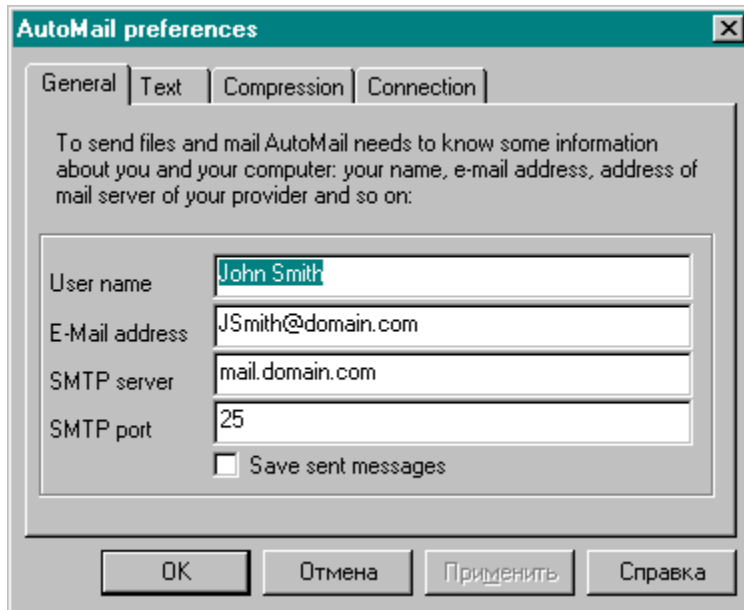
Copyright © Alchemy Labs, 1999

<http://www.alchemy-lab.com>

This list box contains a list of files that you are going to send to the user, email of whom you've entered in the recipient combobox. Typically you do not need to add or remove files in this list manually since you have such an option in Windows Explorer context menu, but if you really need to edit your file list before sending -- right-click the combobox and choose an appropriate menu item.

General preferences

In the General preferences page you have to fill general properties of the mail system you use. To get more information please click the item of your interest on the picture above:



The image shows a screenshot of a software dialog box titled "AutoMail preferences". The dialog has a teal header bar with a close button (X) in the top right corner. Below the header, there are four tabs: "General", "Text", "Compression", and "Connection". The "General" tab is selected. The main content area contains the following text: "To send files and mail AutoMail needs to know some information about you and your computer: your name, e-mail address, address of mail server of your provider and so on:". Below this text are four input fields: "User name" with the value "John Smith", "E-Mail address" with the value "JSmith@domain.com", "SMTP server" with the value "mail.domain.com", and "SMTP port" with the value "25". There is also a checkbox labeled "Save sent messages" which is currently unchecked. At the bottom of the dialog, there are four buttons: "OK", "Отмена" (Cancel), "Применить" (Apply), and "Справка" (Help).

Field	Value
User name	John Smith
E-Mail address	JSmith@domain.com
SMTP server	mail.domain.com
SMTP port	25

Save sent messages

Buttons: OK, Отмена, Применить, Справка

Registration

Why register?

If you like AutoMail and decide to keep it, you probably would like to get more and more of this program, and we do our best to bring new usefull features to it. With your registration we will have ability to work on AutoMail and implement features that will bring more usability to you, such as scheduled mail sending, smart dial-up support, automated split of big messages and so on.

How to register?

- Visit our site at <http://www.alchemy-lab.com/> and go to AutoMail registration page
- Choose registration method and complete transaction
- Receive an e-mail message with registration code
- Type your registration name and code in AutoMail Register dialog

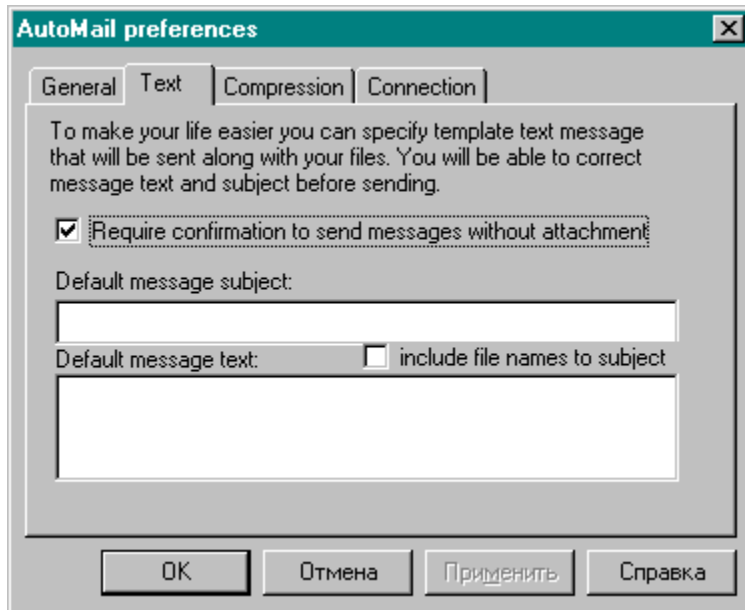
Check this combobox if you want AutoMail to include names of the files you are sending to the subject of a message.

You are connected to the mail server via LAN or WAN if you do not have a modem attached to the computer (or do not use it), but have ability to send/receive mail messages. Most people are connected to mail server via LAN on their job place and use modem at home.

If you are connected to the Internet via LAN/WAN, you have nothing to set up in the Connection tab of AutoMail preferences.

Message preferences

In the Message preferences page you may fill properties of a standard text message, that should be sent with the files. To get more information please click the item of your interest on the picture above:



Put here a line of text that should be shown in the subject of your message.

Type here a body of the text message that should be sent along with the files.

If you use modem to send/receive mail messages, then you are a modem user and should specify modem connection attributes to give AutoMail enough info to dial remote mail server on your request. Most people use modem at home and are connected to mail server via LAN on their job place.

Additional AutoMail functions: help topics, preferences, etc.

Sorry, these functions are to be implemented in the next version only.



In this version, AutoMail allows users to send messages without attached files. However, you may want to be notified when you are trying to send a message without attached files.

Check this checkbox if you want AutoMail to save all outgoing messages in the files on your computer.
Please note, however, that if you often send large files, your hard disk could be easilly filled with this shit.

Invokes AutoMail to send selected files to selected e-mail address

The address of SMTP server of your provider. SMTP server is a server that receives the message you want to send and sends it to the recipients. If you do not remember address of your provider's SMTP server -- please call your provider's hot line and ask them to tell you it.

SMTP server port is a special number, that works as a second part of server address. SMTP servers in most cases work on the 25th port, so do not edit this field without strong motivation.

Your e-mail, i.e. the address that will be shown in the "From:" field of your message

Your name, i.e. the name that will be included in the message to the "From:" field.

